

Greenwich Housing

Royal Borough of Greenwich, London

Client

Royal Borough of Greenwich

Project Cost

Undisclosed

Status

Complete

Awards

Civic Trust Awards 2017 / Winner

RIBA National Award 2016 / Winner

RIBA London Region Award 2016 / Winner

New London Architecture Award 2016 / Commended

Blueprint Awards 2016 / Commended

Sunday Times British Homes Awards 2016 /

Highly Commended

Building Awards 2016 / Shortlisted

Inside Housing Awards 2016 / Winner

Housing Design Awards 2016 / Shortlisted

RICS Award 2016 / Shortlisted

Planning and Placemaking Award 2016 /

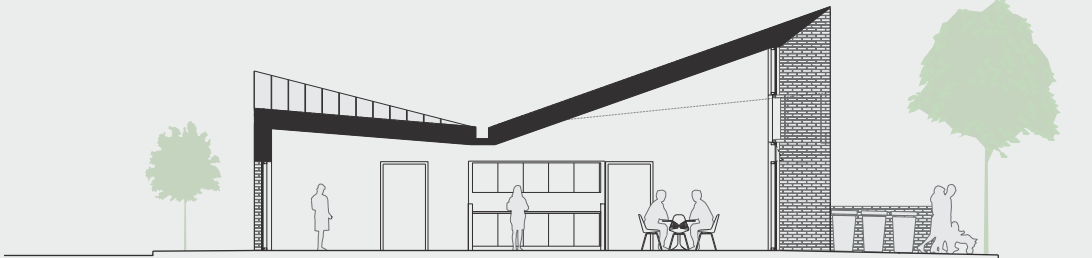
Highly Commended

Housing Design Awards 2014 / Winner

New London Architecture Award 2014 / Shortlisted

Greenwich has identified an acute need for affordable, single storey dwellings for people over 60 years of age and the Council has been granted funding to construct 35 new dwellings on eight small sites across the borough.

A prototype single storey house has been developed that can be arranged in alternative layouts on different sites. A monopitch roof with extensive glazing provides a good quality of height, space and natural light regardless of orientation. The additional height provided by this roof form allows the houses to sit comfortably within urban contexts and provides a generous double height space internally.



Greenwich Housing / Bell Phillips Architects



