

## Bracelet Close

Corringham, Thurrock

### Client

Thurrock Council

### Project Cost

£2.5 million

### Status

Completed 2016

### Awards

Civic Trust Award 2018 / Commendation / Winner

RIBA East Region Award 2018 / Shortlisted

RICS Award 2017 / Winner

RIBA East Region Award 2017 / Shortlisted

Architects Journal Architecture Award 2017 / Shortlisted

Blueprint Award 2017 / Shortlisted

Housing Design Awards 2017 / Shortlisted

Sunday Times British Homes Awards 2016 / Shortlisted

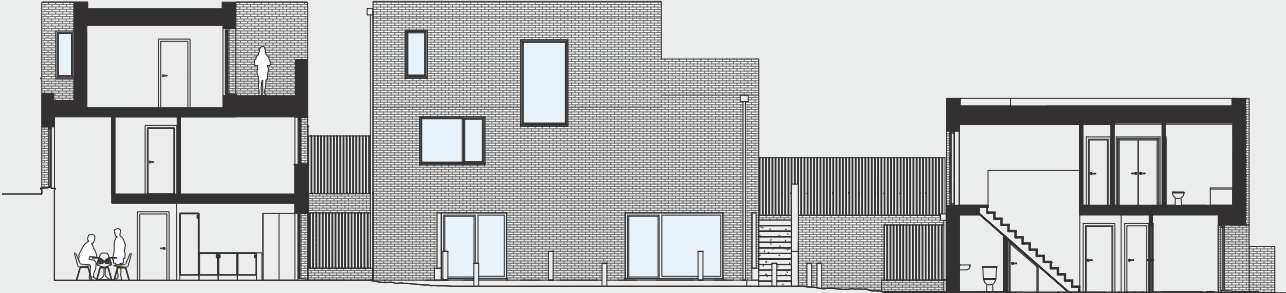
Housing Design Awards 2014 / Shortlisted

This project was one of five new developments undertaken by Bell Phillips Architects for Thurrock Council as part of their new housing programme.

The design seeks to create a coherent urban form, appropriately scaled to foster a strong sense of community. The development comprises twelve new homes arranged around a communal garden.

The houses have been designed to make the most of the sloping site and views to the countryside beyond and to offer outstanding levels of amenity and light. Three-storey terraced houses on the higher part of the site benefit from double height spaces which bring light into the living space from the south and roof terraces that offer views towards the north. Smaller two-storey terraced houses front on to the adjacent street and have terraces that face southwards into the communal garden. At ground floor the houses have a generous living, dining and kitchen area which opens onto a private patio, beyond which is the communal garden.

Bracelet Close / Bell Phillips Architects



Bracelet Close / Bell Phillips Architects



