

Newham Housing

Multiple Sites, Newham

Client

London Borough of Newham

Project Cost

Undisclosed

Status

Under construction

Awards

Housing Design Awards 2016/ Shortlisted

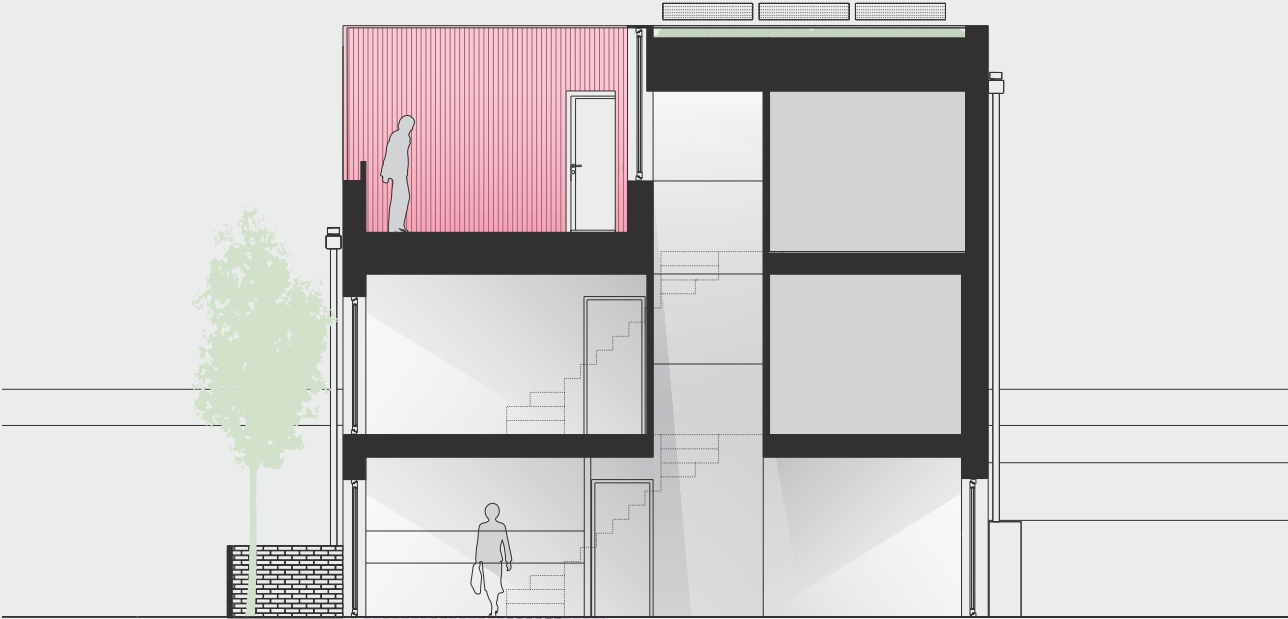
Housing Design Awards 2014/ Shortlisted

In 2012 we were appointed by the London Borough of Newham to assess the potential for developing a standard terraced house that could be used to provide affordable council housing across 17 sites throughout the Borough. This study incorporated an analysis of traditional versus volumetric construction.

Following this study we were appointed along with two other practices to develop alternative designs for 3-bed 6-person terraced houses that could be replicated across the sites. Each architect worked separately, developing alternative approaches, whilst working together to identify opportunities for standardisation.

Our proposal sought to deliver excellent quality of space, light and amenity regardless of orientation and context. The result is a 3-storey terraced house with garden at the rear and roof terrace at the front to animate the street. A central lightwell, brings natural light down through the heart of the house. A second floor terrace supplements the rear garden providing outstanding private amenity whilst animating the street.

Newham Housing / Bell Phillips Architects



Newham Housing / Bell Phillips Architects



