

Granary Square Pavilion

King's Cross, Camden

Client

King's Cross Central Ltd Partners / Argent

Project Cost

Undisclosed

Status

Completed 2019

Awards

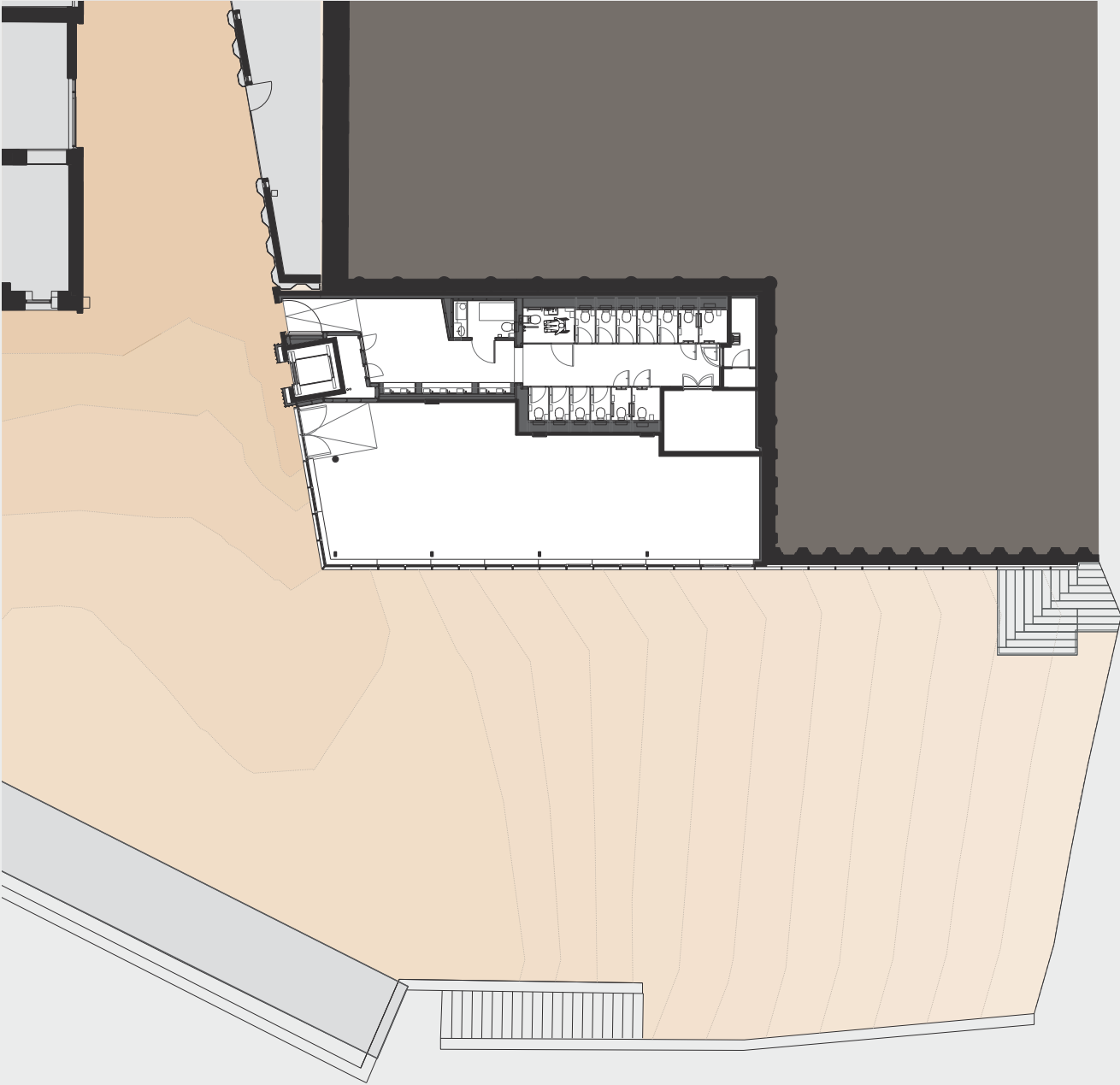
NLA Award 2020 / Shortlisted

The Granary Square Pavilion is a new pavilion incorporating a retail unit, public WCs and public access lift connecting Granary Square to Lower Stable Street on a prominent site opposite the Granary Building and Thomas Heatherwick's new retail complex at Coal Drops Yard.

The pavilion has a decorative cast iron façade that extends up to the form a balustrade to Granary Square. The pattern of the cast iron is inspired by the molecular structure of coal referencing the site's industrial heritage.

The pavilion is the second of three additions to the public realm at King's Cross by Bell Phillips Architects following on from Gasholder Park. The third, a new pavilion in Jellicoe Gardens, will commence construction in 2020.

Granary Square Pavilion / Bell Phillips Architects



Granary Square Pavilion / Bell Phillips Architects



